

In-Office Aligner
Production.
Digitally Controlled.
Clinically Driven.



powered by

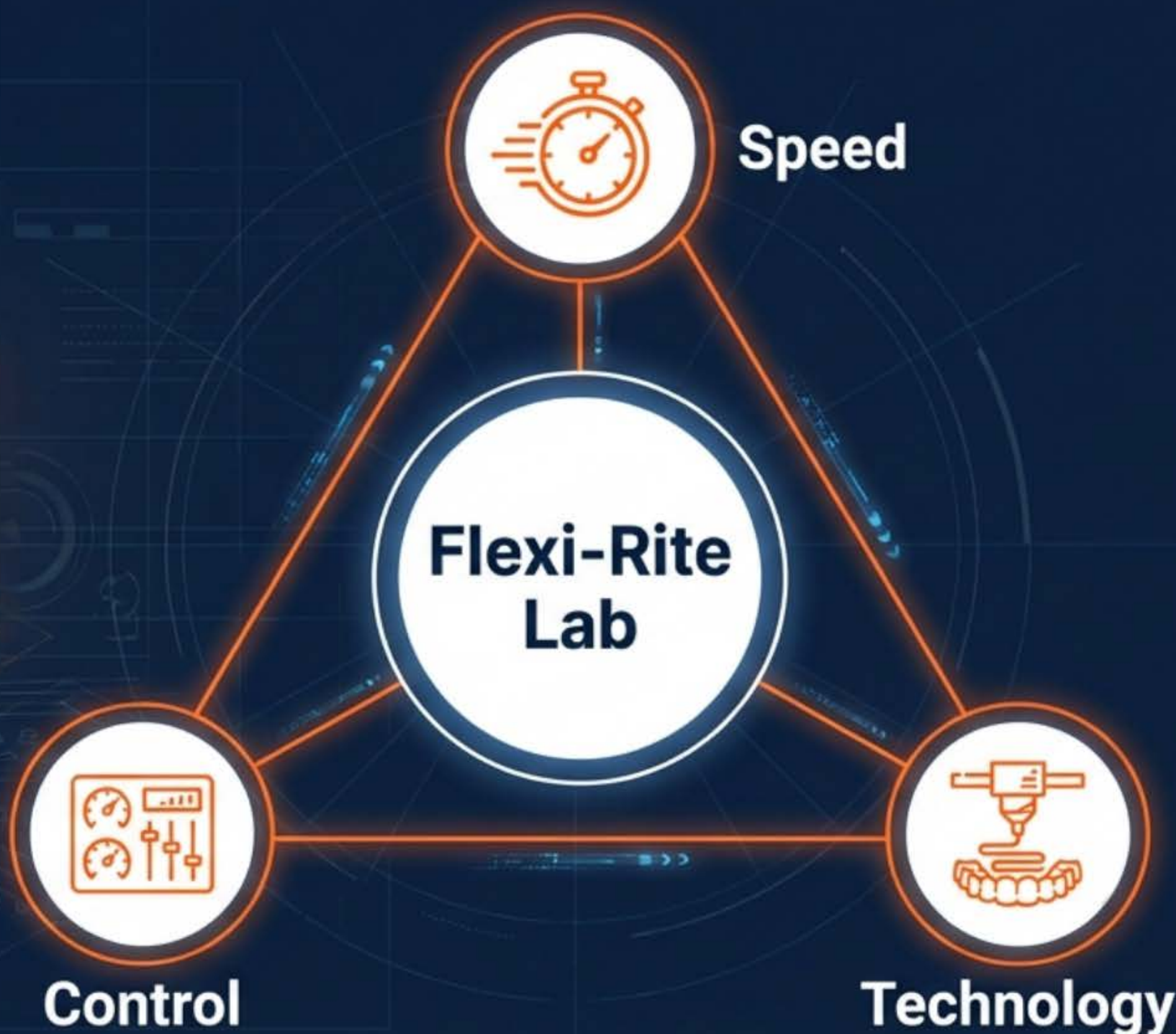
Graphy



Shape Memory
Aligners

World's 1st 3D printed Shape memory aligner

Your In-Office Digital Production Partner

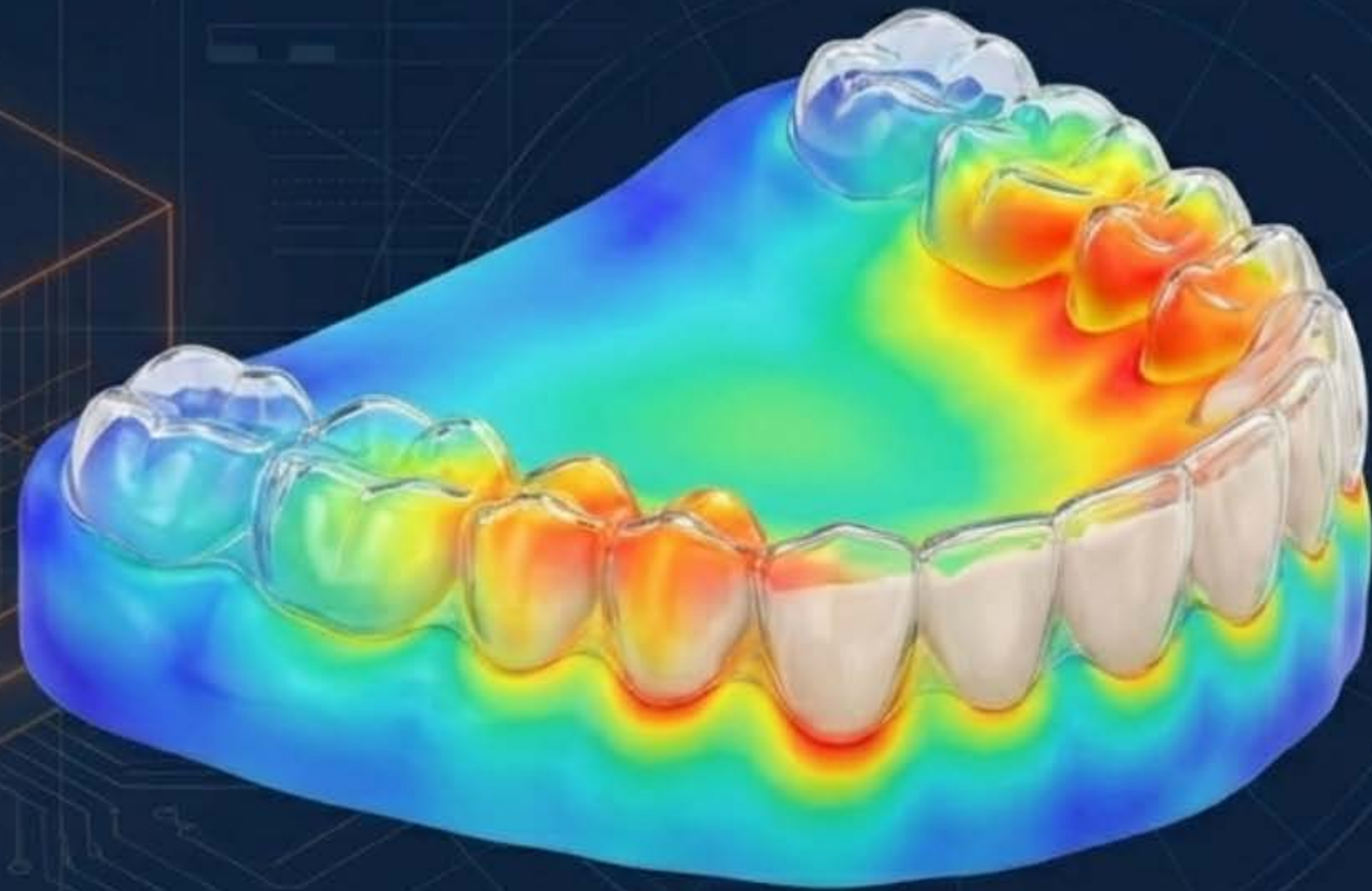


Flexi-Rite is an in-office digital aligner production lab designed to enable clinicians to initiate treatment faster with full digital control. We integrate digital case intake with two distinct manufacturing streams to suit every patient need.

- ✓ **Digital** case intake via portal
- ✓ Advanced treatment planning & staging
- ✓ **Dual-modality** manufacturing: Conventional & Direct-Print Graphy

The Core Innovation: Graphy Shape Memory Technology

Move beyond passive plastic.



Thermo-responsive Material

The aligners are printed using direct 3D Shape Memory technology that activates at body temperature.

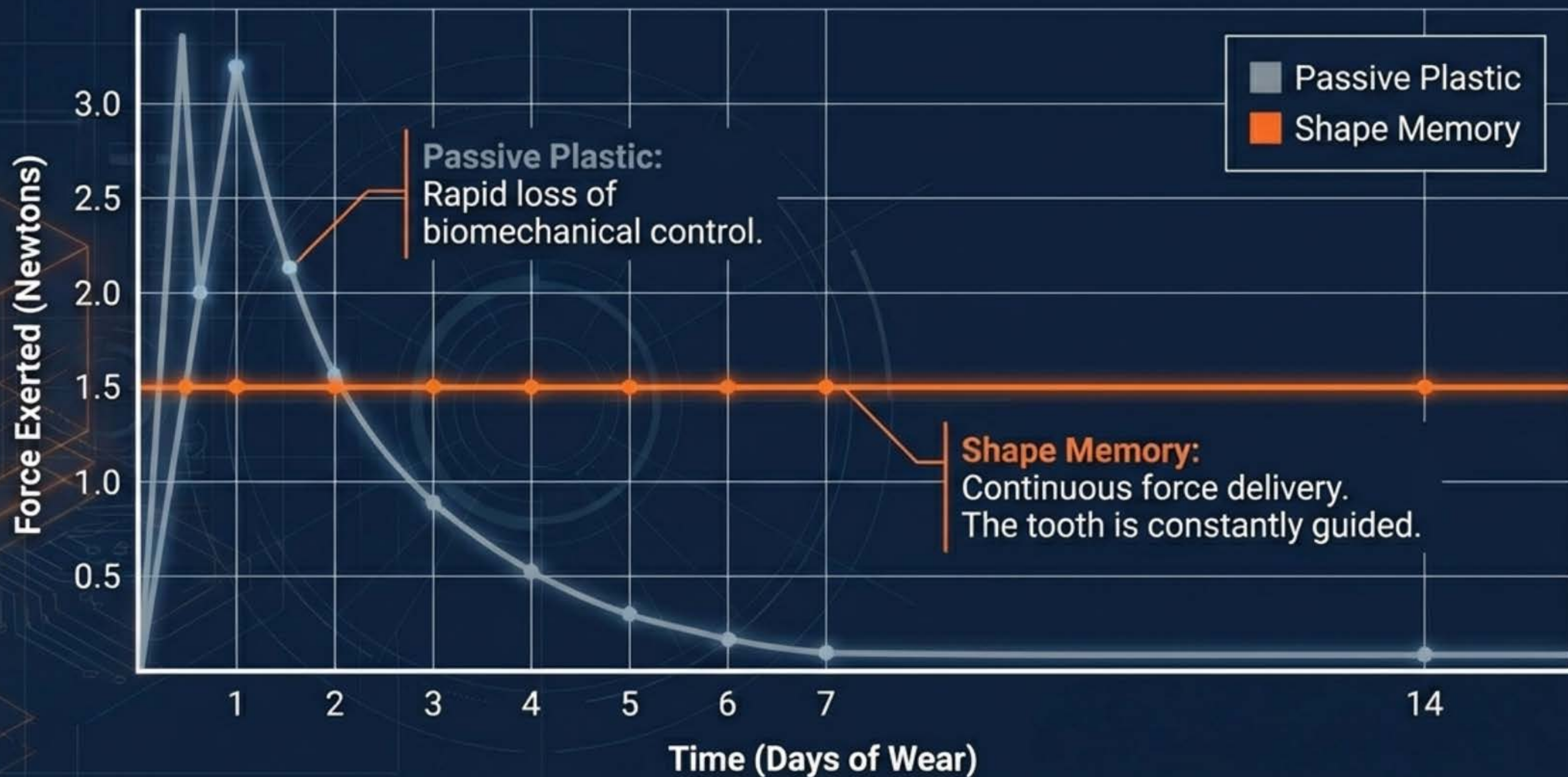
The Mechanism

Unlike static plastic that pushes only upon insertion, Graphy material provides continuous, active force delivery as it interacts with the oral environment.

The Impact

Reduced reliance on attachments and fewer stages required for complex movements.

Comparative Science: Force Decay vs. Sustained Activation



Two Treatment Modalities for Clinical Flexibility

Modality A: Conventional



- **Process:** Model Print + Vacuum Form
- **Use Case:** Best for standard mild-to-moderate cases and budget-sensitive patients.
- **Mechanism:** Sequential staging using traditional thermoforming.

Modality B: Graphy Direct Print



- **Process:** Direct 3D Printed Shape Memory Aligners
- **Use Case:** Best for complex biomechanics, speed, and comfort.
- **Mechanism:** Powered by Graphy Inc. technology; activates at body temperature.

The Digital Ecosystem: Your Command Center

1. Drag & Drop Upload (STL/DICOM)

1.



2. Live Status Tracker (Design -> Production)

2.

3. Treatment Plan Review

A streamlined portal system designed to minimize administrative friction. From case submission to final delivery, you maintain visibility on every patient's status.

Workflow Steps 1 & 2: Submission and Design



1. Case Submission

Inputs Required: Patient details, Intraoral scans (STL), X-rays, Clinical photos.

Key Benefit: Simple, consolidated upload process.



2. Treatment Design

Activities: Digital staging, Biomechanical planning, Force optimization.

Key Benefit: We don't just print; we engineer the movement.

Workflow Steps 3 & 4: Approval to Delivery



3. Approval

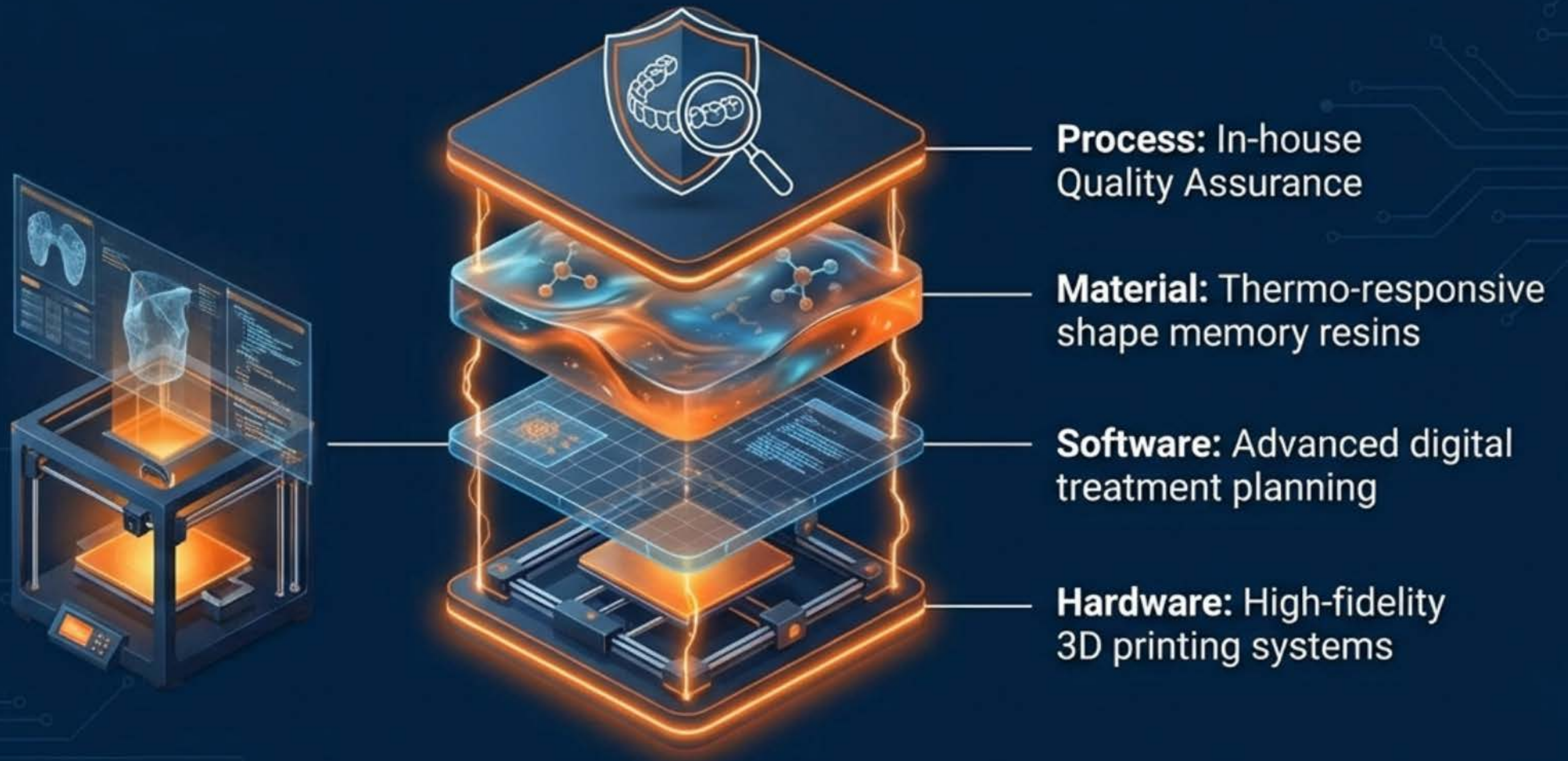
- **Action:** Doctor reviews the digital setup.
- **Flexibility:** Request adjustments or provide final sign-off.



4. Production & Delivery

- **Action:** Aligners fabricated immediately upon approval.
- **Result:** Treatment begins ASAP.

The Technology Stack



An integrated ecosystem ensuring clinical precision from scan to shipment.

Clinical Advantages: Take Back Control

Speed

Faster case initiation compared to outsourcing.

Control

Greater biomechanical oversight and reduced dependency on external labs.

Efficiency

Streamlined digital workflow integration.

Versatility

Ability to choose treatment options (Standard vs. Graphy) per case.



The Patient Experience



Shorter Turnaround

Less waiting time between scan and start of treatment.

Comfort

More comfortable force delivery due to shape memory properties (less "tightness" pain).

Perception

Patients value the advanced technology positioning of the practice.

Workflow Timeline & Efficiency

Traditional Lab



Flexi-Rite



Time Saved = Revenue Generated

By internalizing the digital production link, we remove shipping lags and administrative queues, allowing you to start revenue-generating treatment sooner.

More Than a Vendor.

Flexi-Rite Aligners is not just an aligner provider. We are a digital production partner enabling modern orthodontic workflows.

We handle the engineering and fabrication so you can focus on the clinical artistry.

The Future of In-Office Aligner Therapy



**FLEXIBLE.
EFFICIENT.
ADVANCED.**

Initialize your first case at [Portal URL]